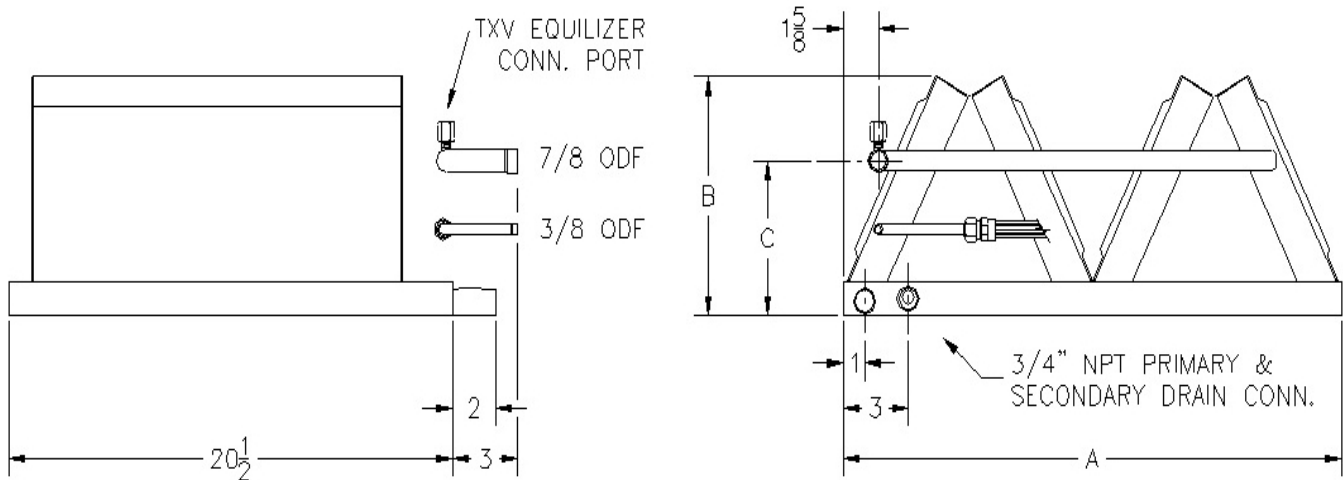




The *DXMC Series* high-efficiency evaporator M-Coils provide an excellent option where low profile installations are required. The coils are applicable in up-flow or down-flow configurations. Each coil comes TXV ready with threaded equalizer port and liquid connection for simple field installation of OEM expansion valves. Multiple pistons sized for the nominal tonnage span of each coil are included for fixed orifice metering.



Model DXAC-	Face (ft ²)	Coil Rows	A	B	C
1836	3.67	2	17"	8-1/4"	5"
3048	4.58	2	21"	10-1/8"	6-3/4"
4260	5.50	2	24"	12"	8-5/8"

R-22 or R-410A
Bi-Directional Airflow
Enhanced Aluminum Fins
Rifled Copper Tubing

Available through our large network of wholesale distributors



Capacities						
Model DXMC-	CFM	Air PD ("wg)	R-22 M BTU/HR		R-410A M BTU/HR	
			Total	Sensible	Total	Sensible
1836	600	0.11	27.6	18.4	29.7	19.6
	800	0.16	32.7	22.5	35.8	23.8
	1000	0.22	36.4	25.9	40.8	27.8
	1200	0.29	39.4	29.0	44.9	31.3
3048	1000	0.17	42.6	28.7	47.2	30.8
	1200	0.22	47.6	32.7	51.0	34.2
	1400	0.28	51.7	36.1	56.0	38.1
	1600	0.34	55.3	39.4	60.6	41.6
4260	1400	0.21	55.1	38.0	60.0	40.3
	1600	0.25	59.1	41.4	65.1	44.2
	1800	0.30	62.7	44.6	69.6	47.8
	2000	0.35	65.7	47.5	73.6	51.1

The *DXMC Series* may be used to replace coils outside of these capacities. For cooling only coils, select the model that most closely matches the face area and slab rows of the coil to be replaced. For heat-pump coils, the internal volume of the replacement coil must be within 3% of the coil to be replaced. The *DXMC* coil shall be metered to match the system condensing/heat-pump unit and charged accordingly.